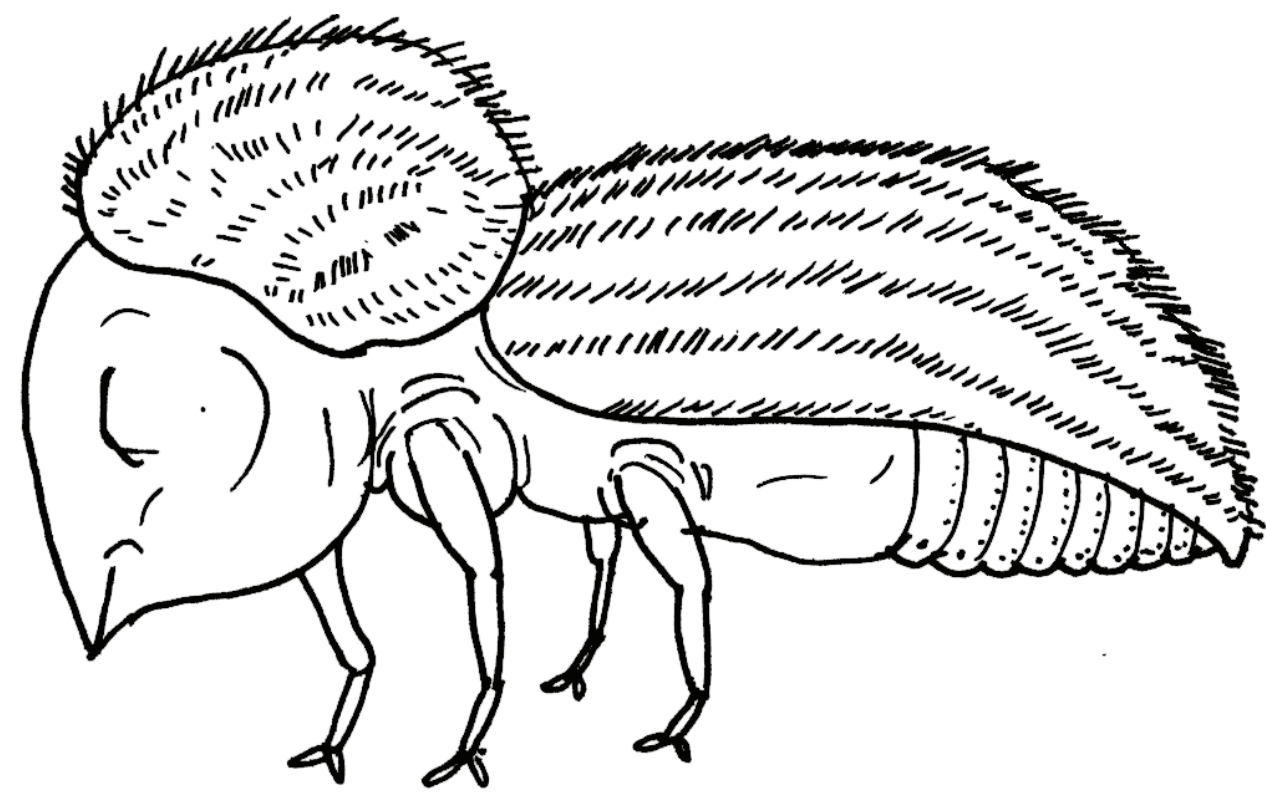


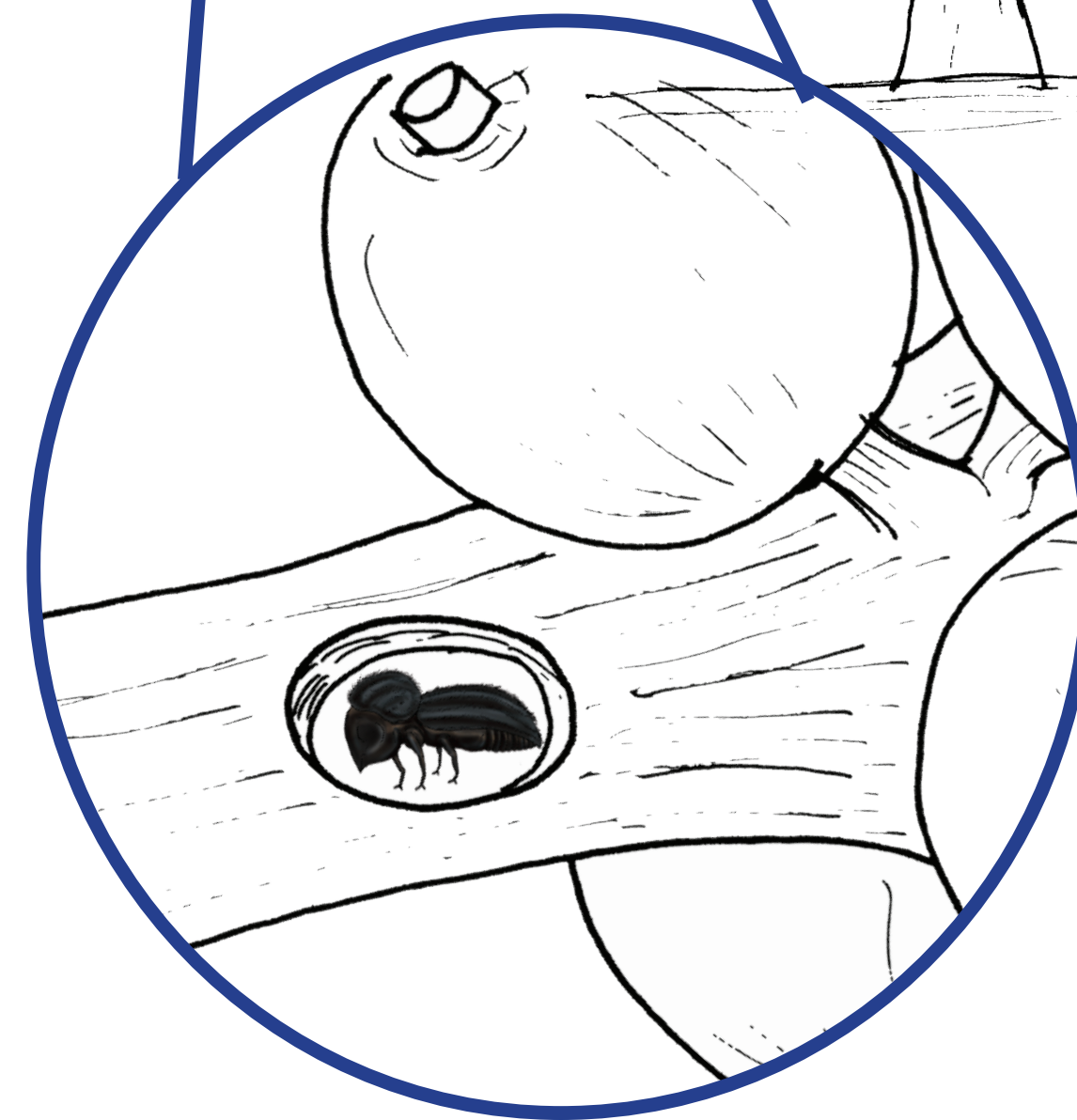
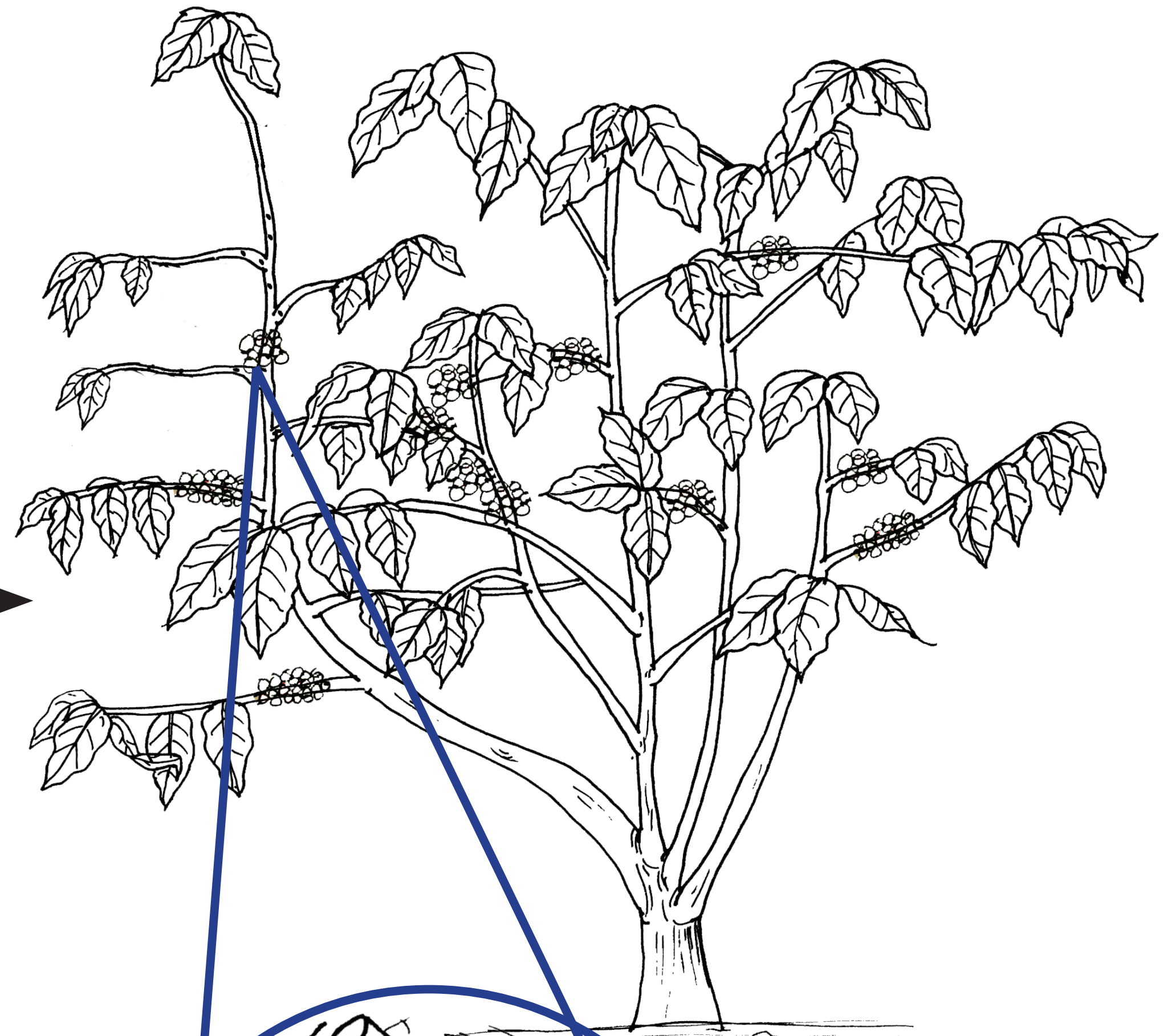
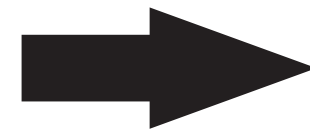
3.0 Main insect pests of coffee

- 3.1 Black twig borer (mainly Robusta)
- 3.2 Root mealy bug
- 3.3 White stem borer (mainly Arabica)
- 3.4 Coffee berry borer
- 3.5 Antestia bug (Arabica only)
- 3.6 Coffee lace bug (Arabica only)
- 3.7 Aphids, leaf mealy bug and scales

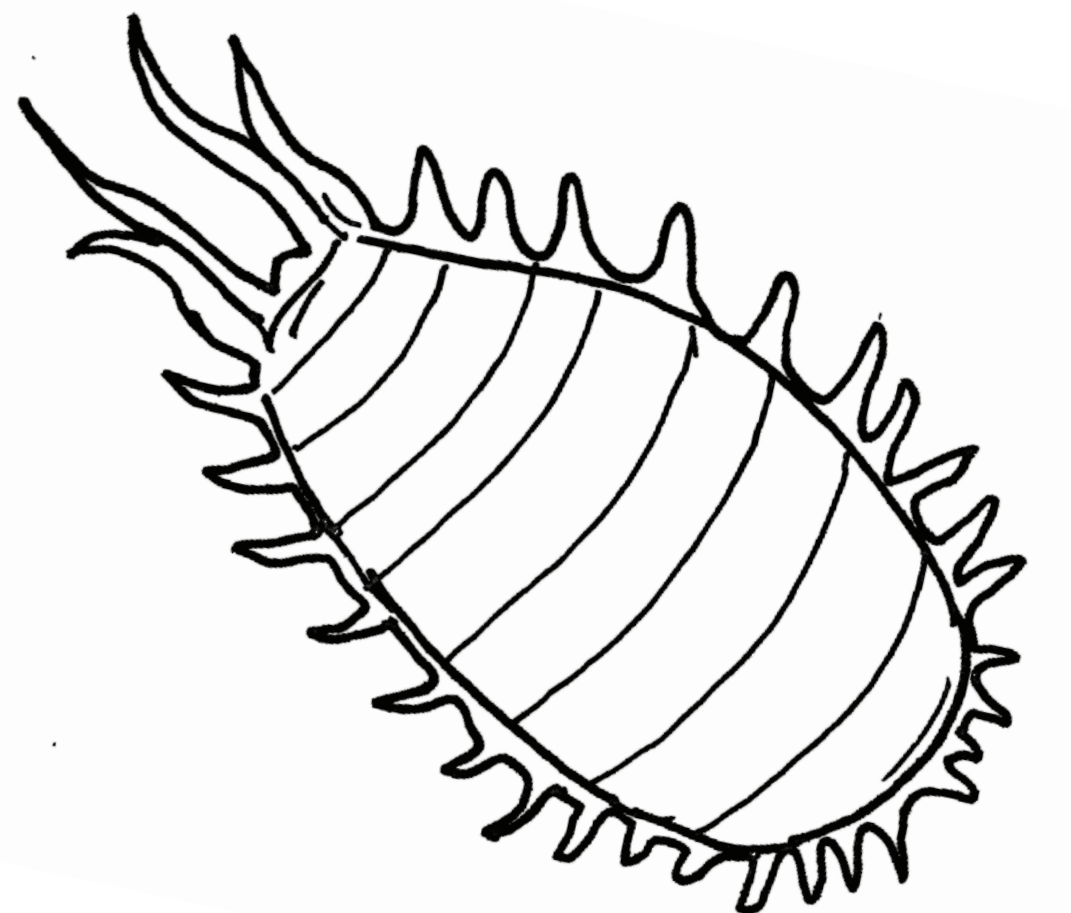
3.1 Black twig borer (mainly Robusta)



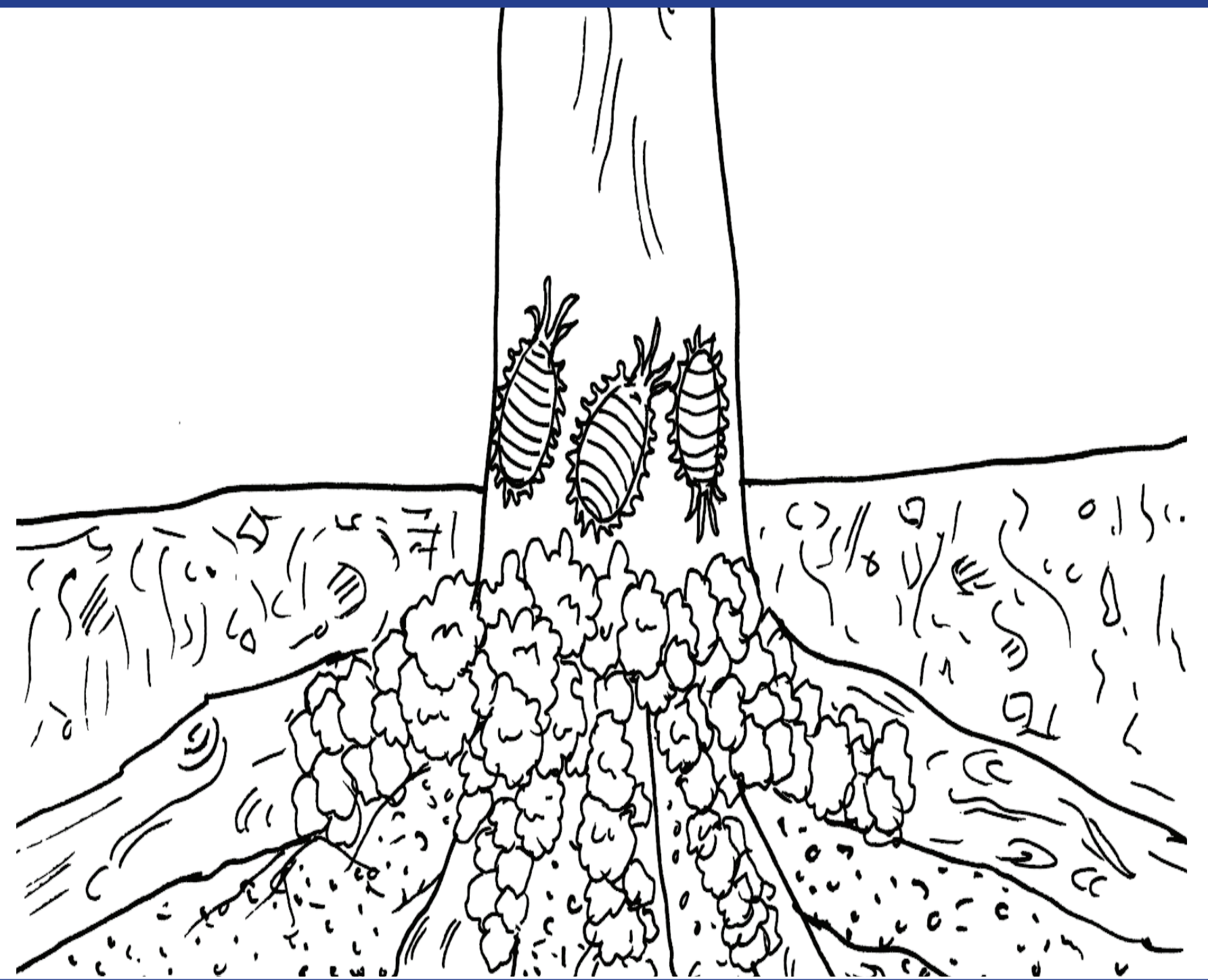
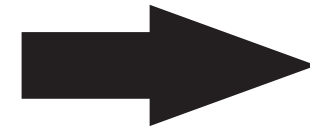
1-2 mm



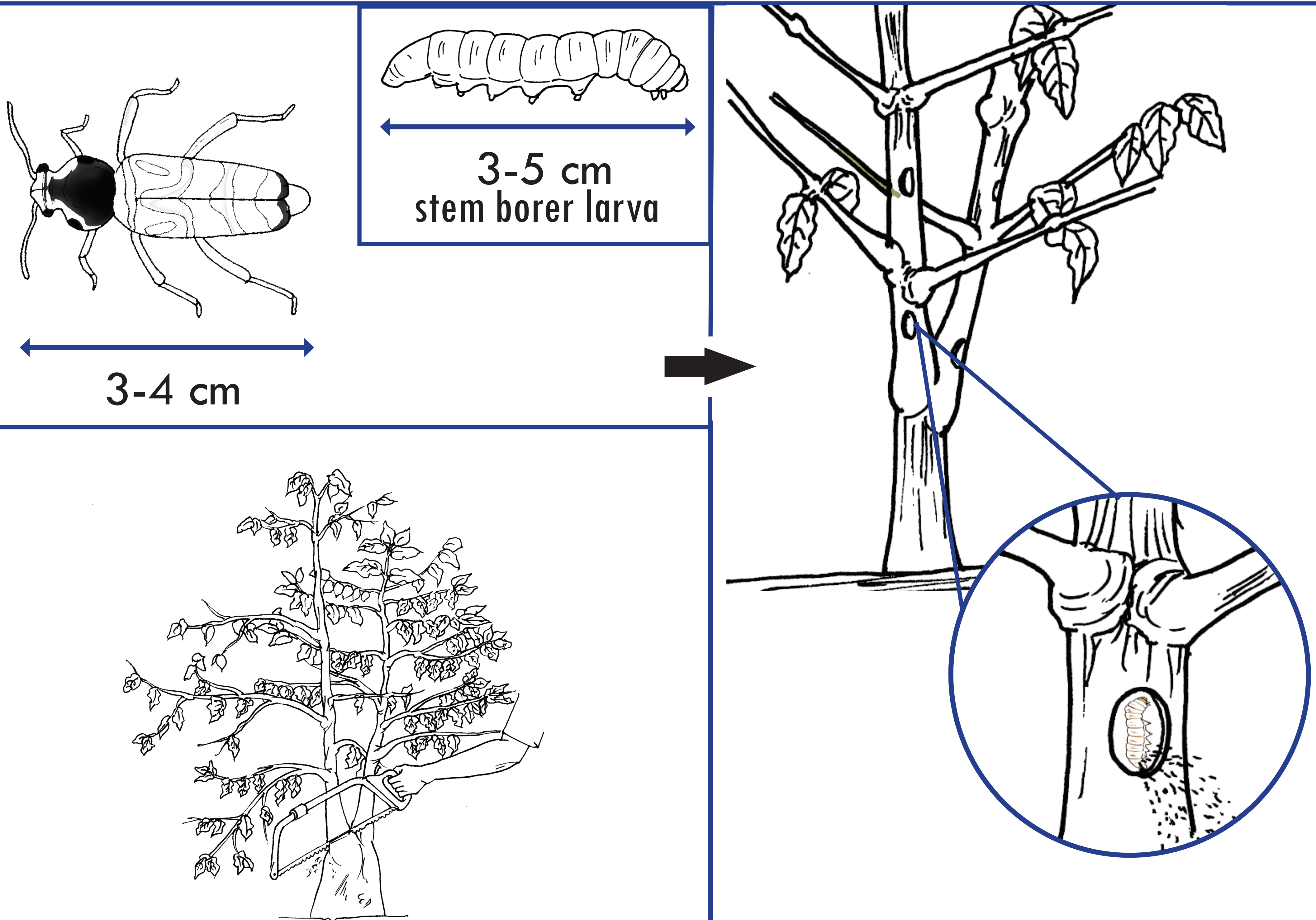
3.2 Root mealy bug



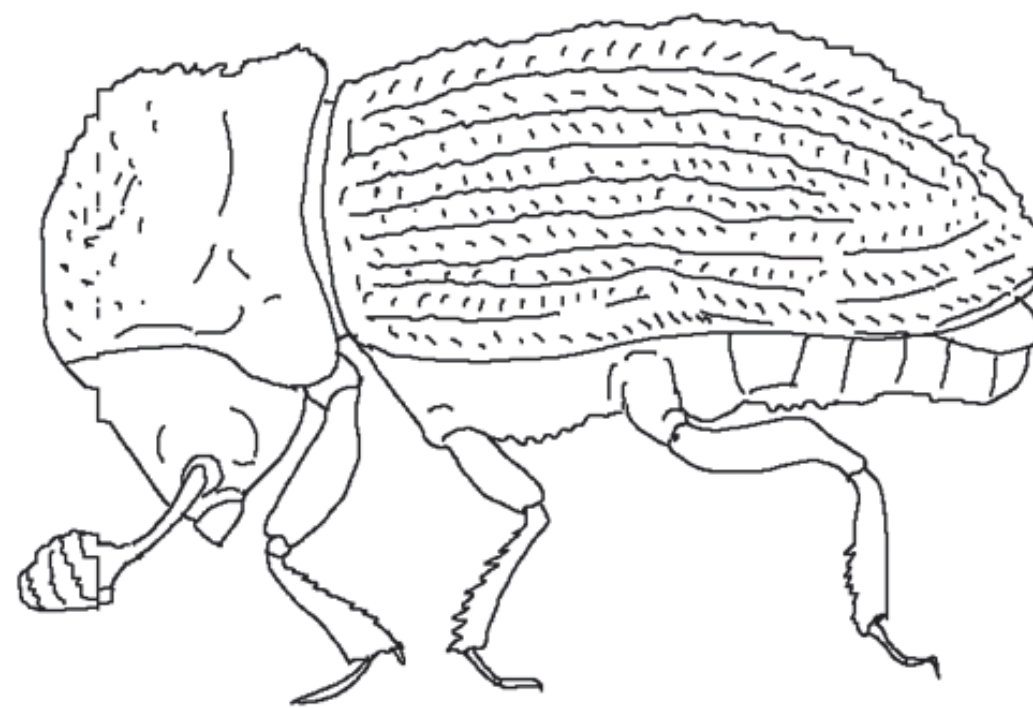
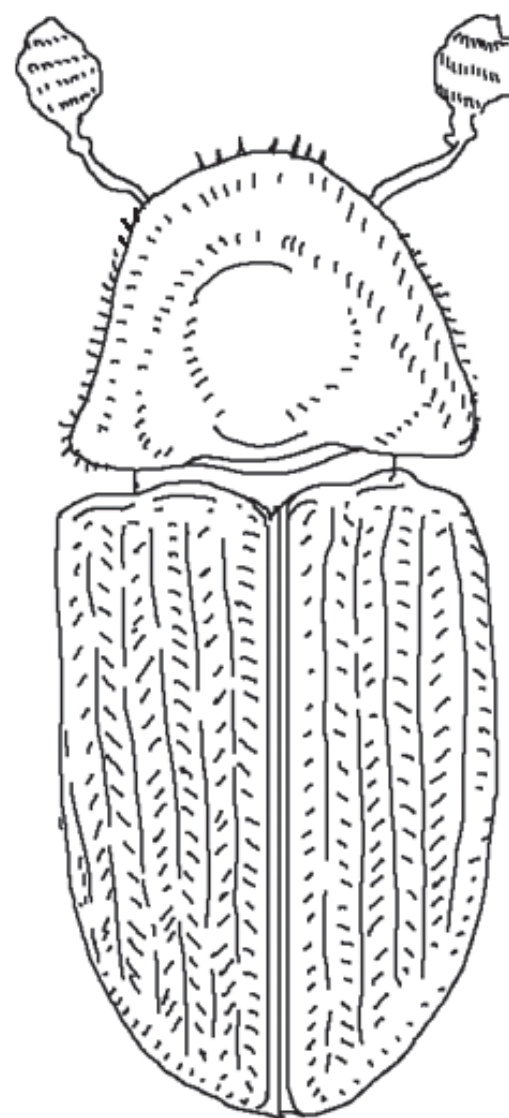
6 mm



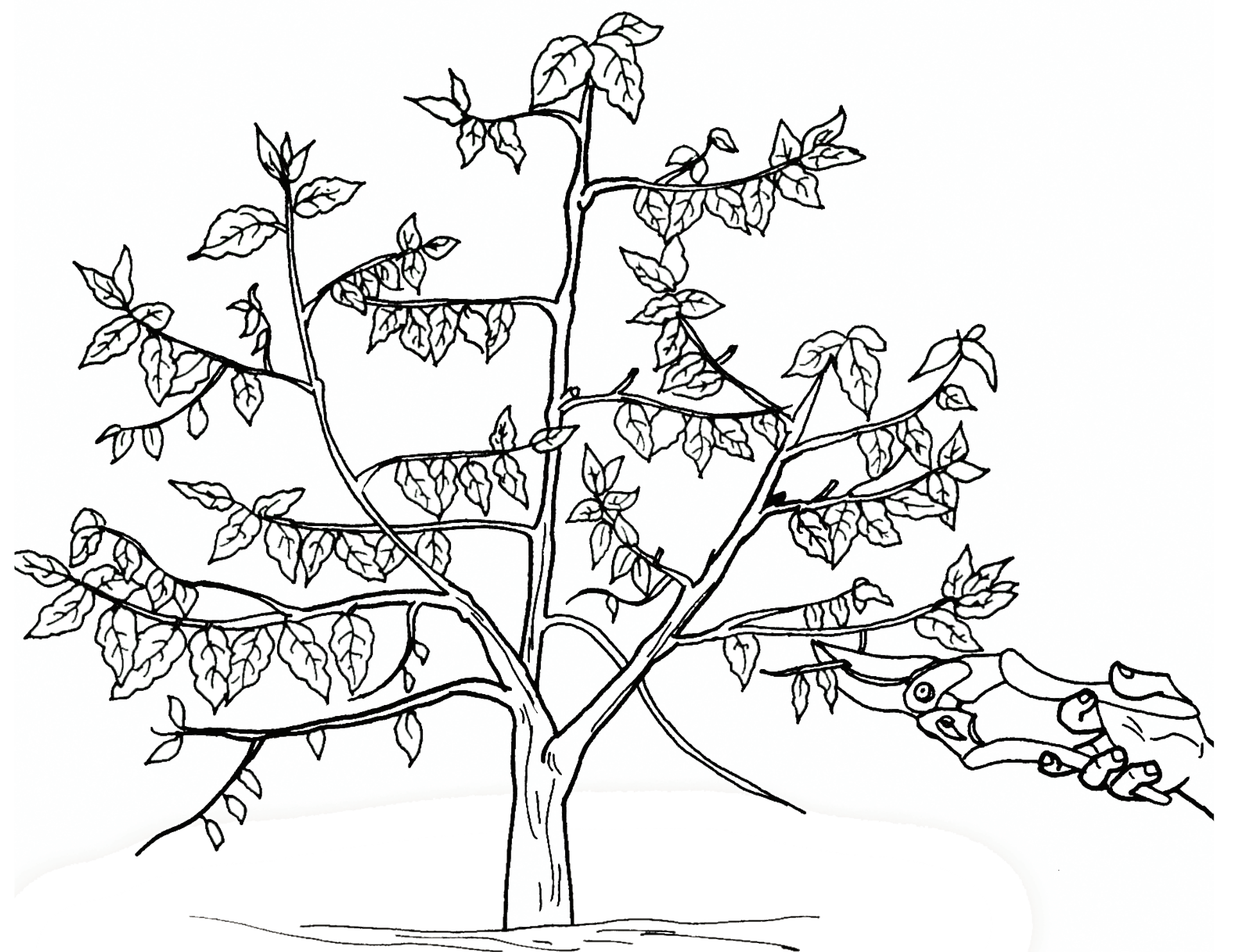
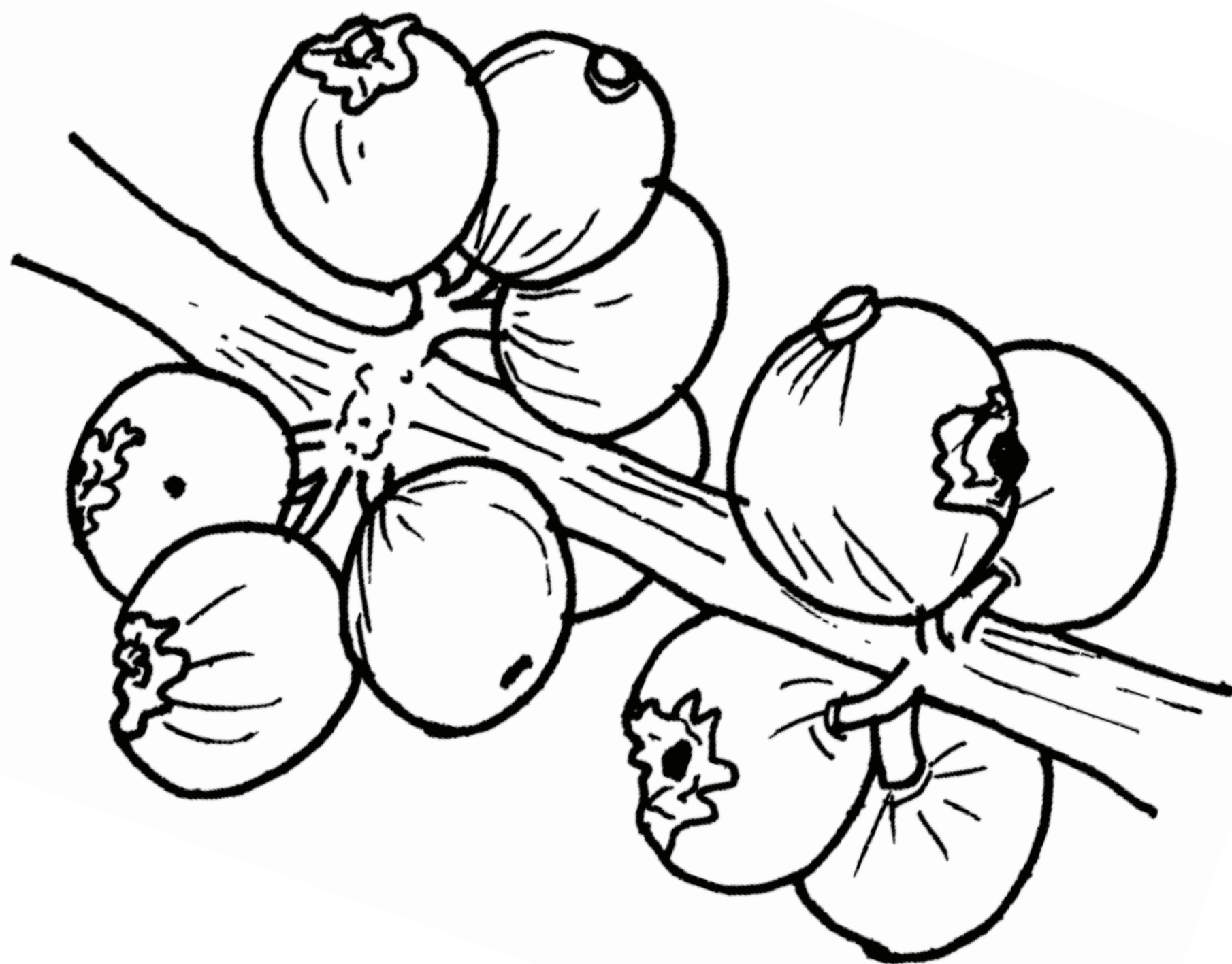
3.3 White stem borer (mainly Arabica)



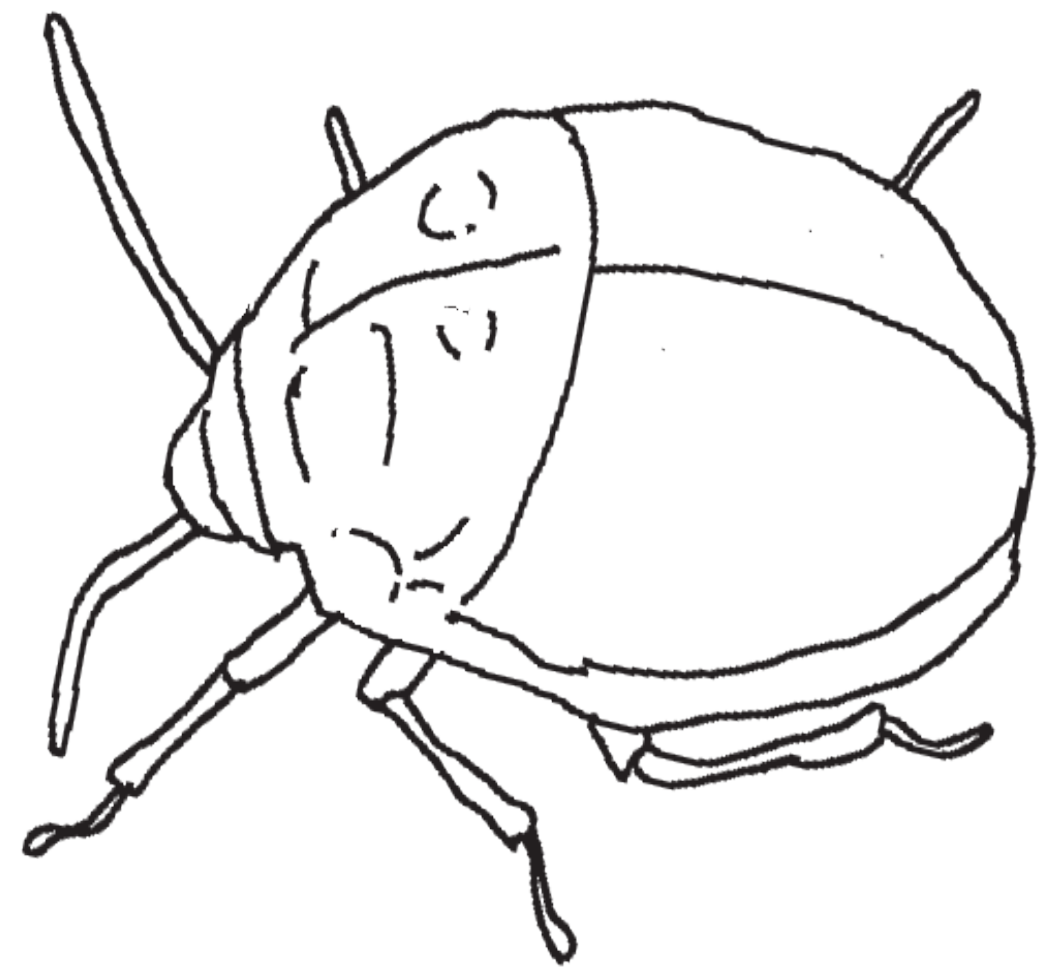
3.4 Berry borer



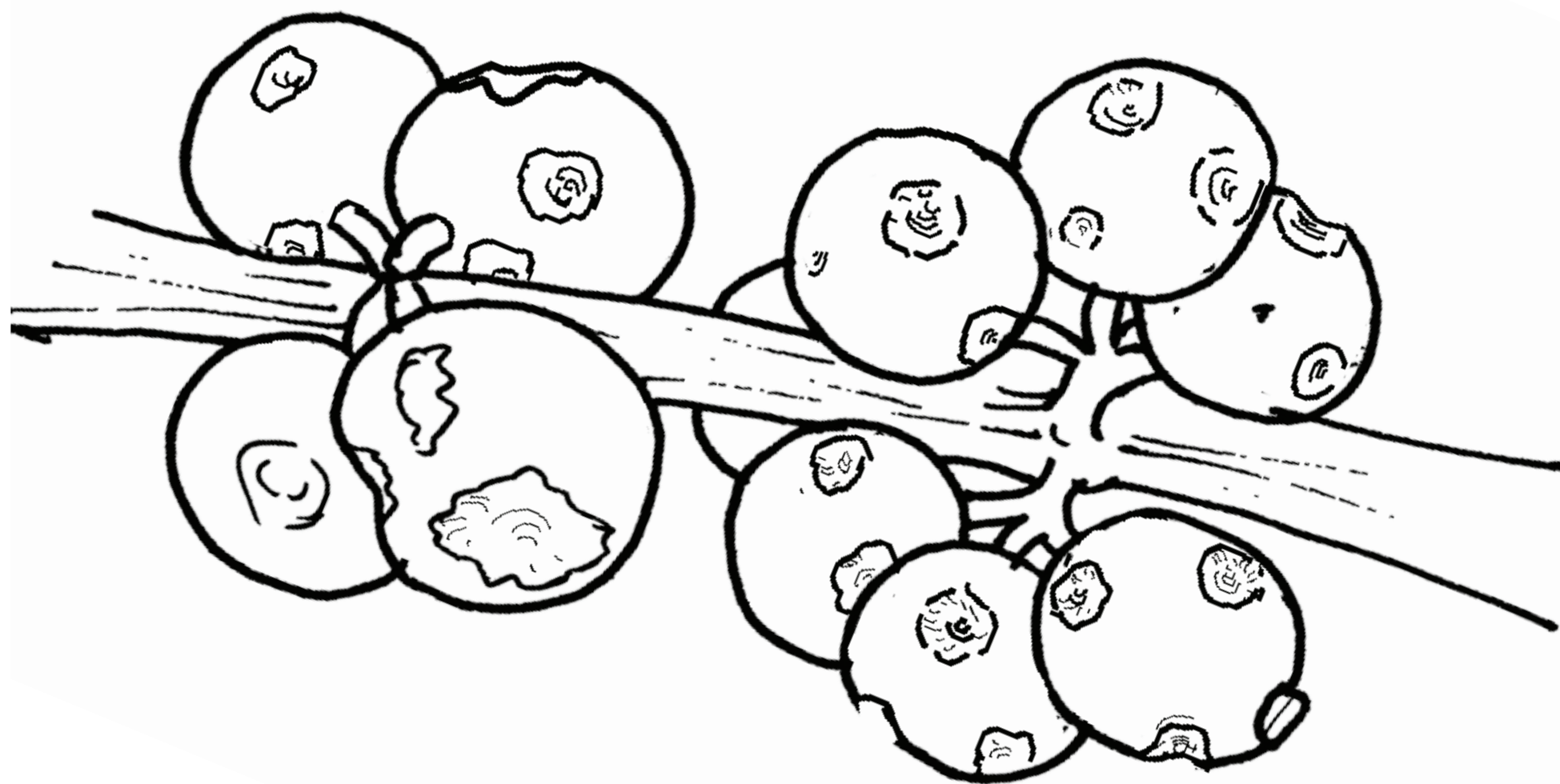
1.5 - 2.5 mm



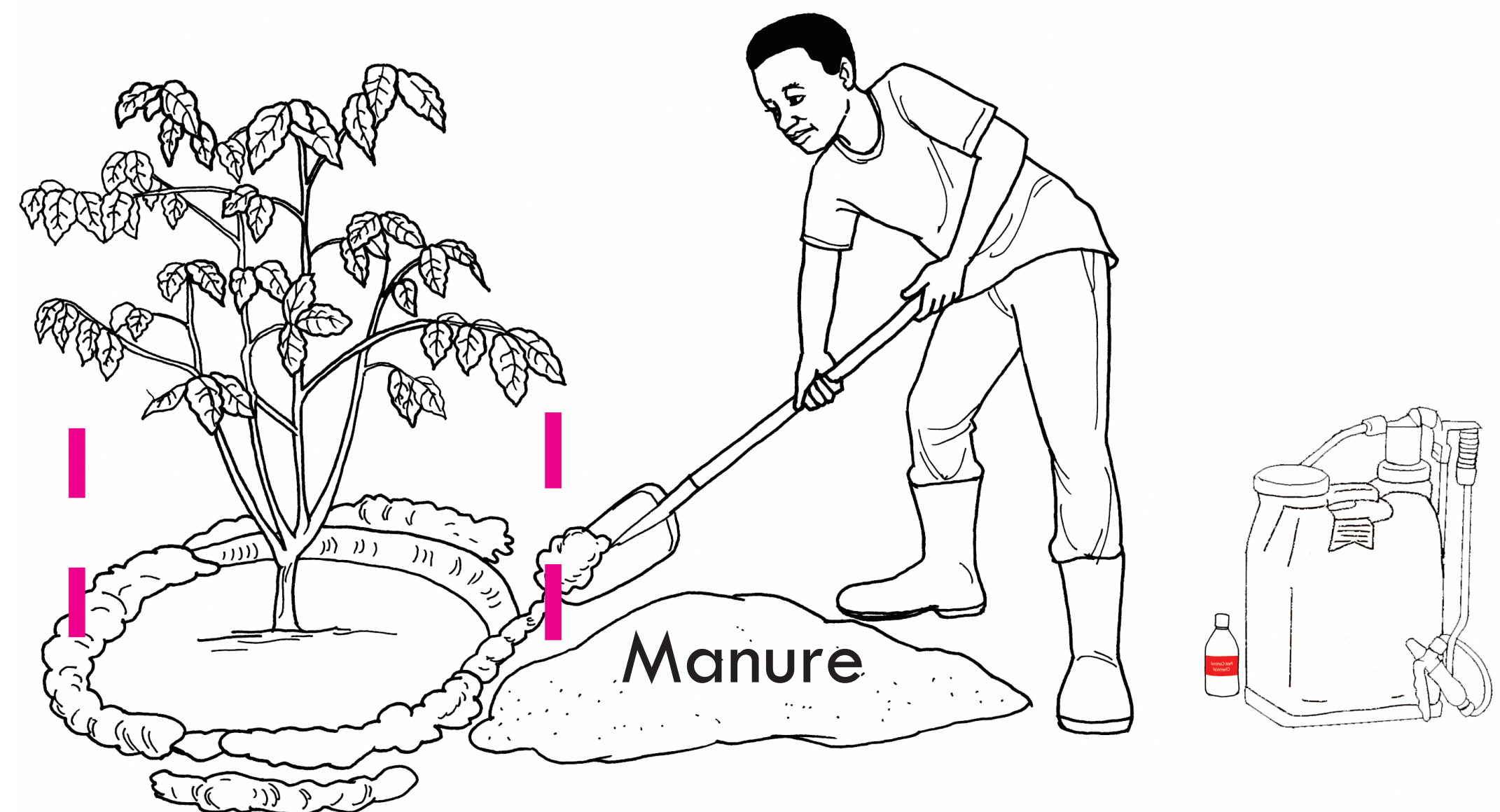
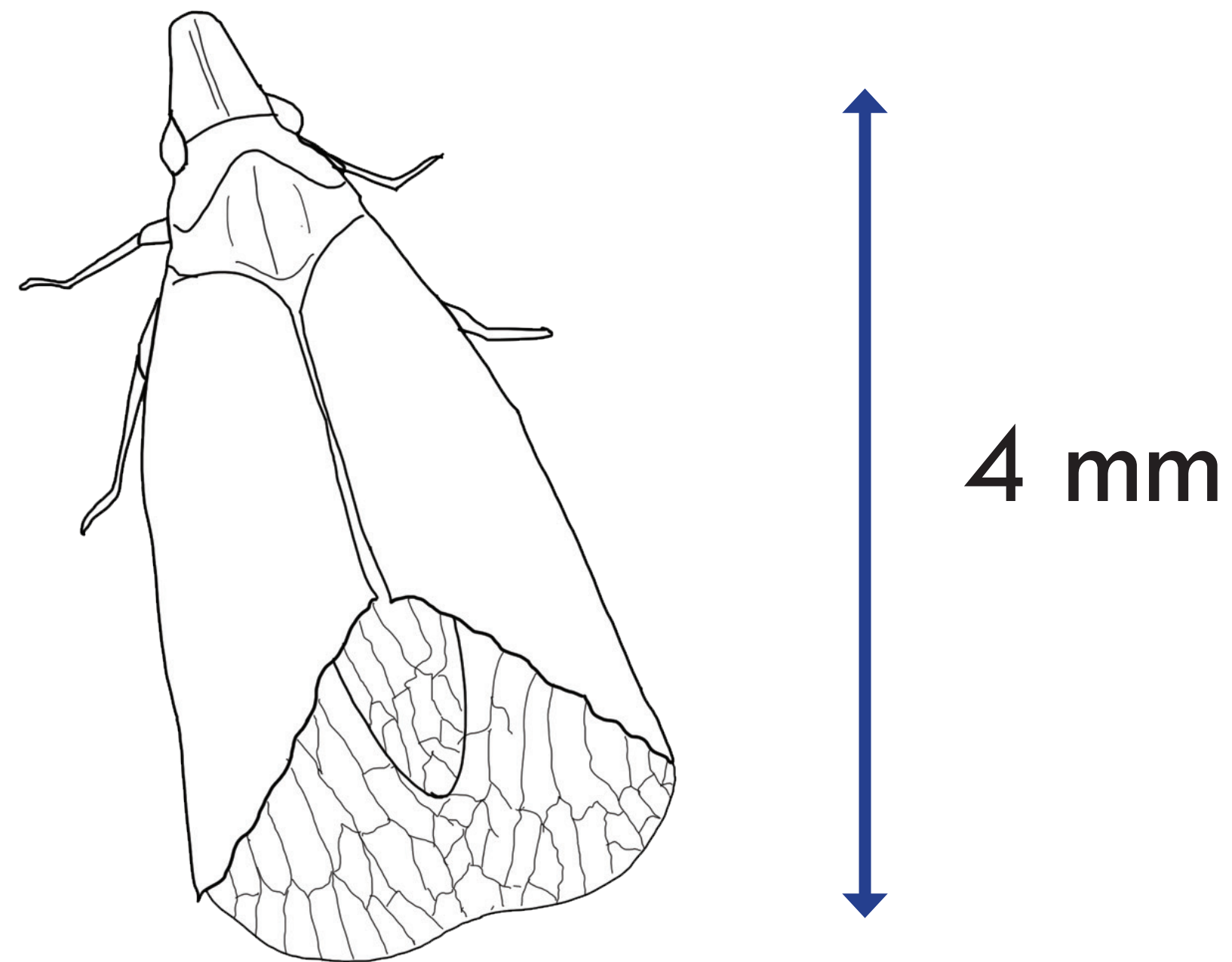
3.5 Antestia bug (Arabica only)



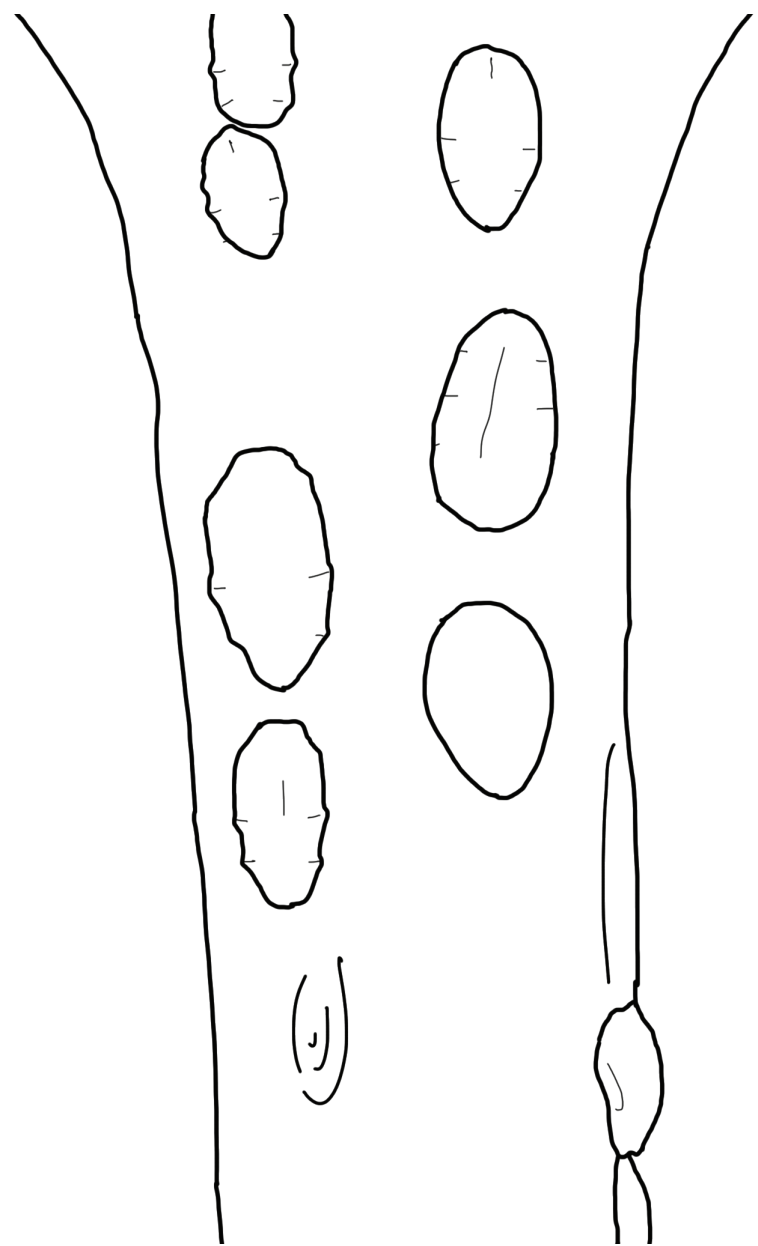
6 mm



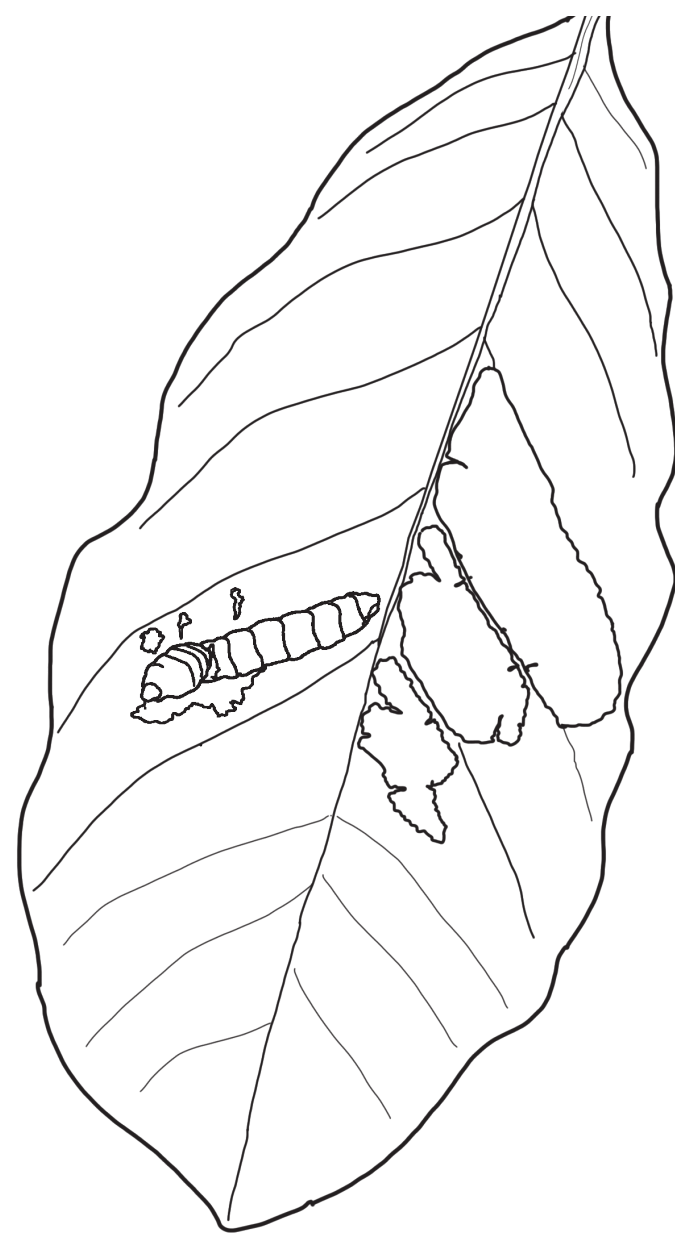
3.6 Coffee lace bug (Arabica only)



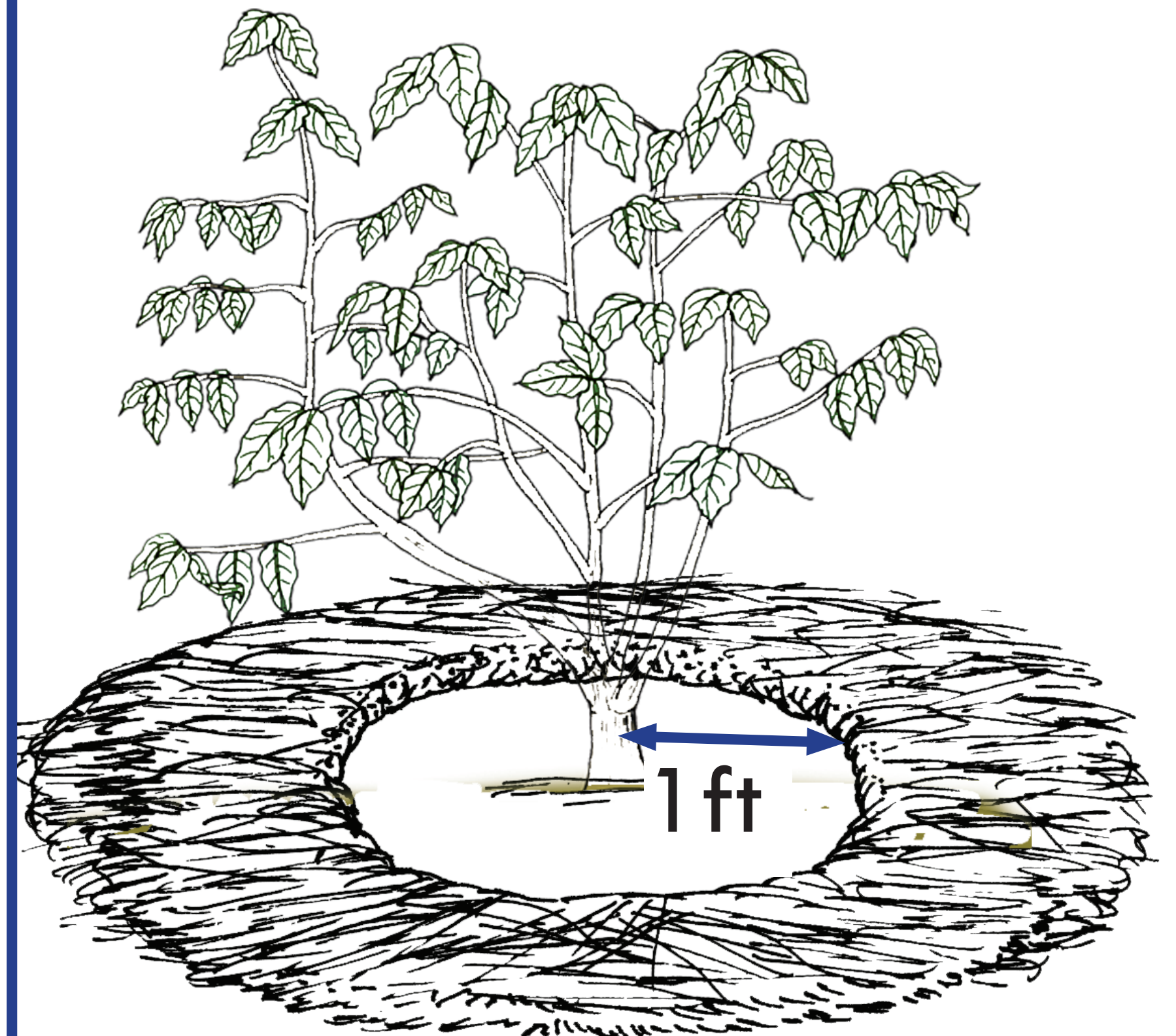
3.7 Aphids, leaf mealy bug, scales and others



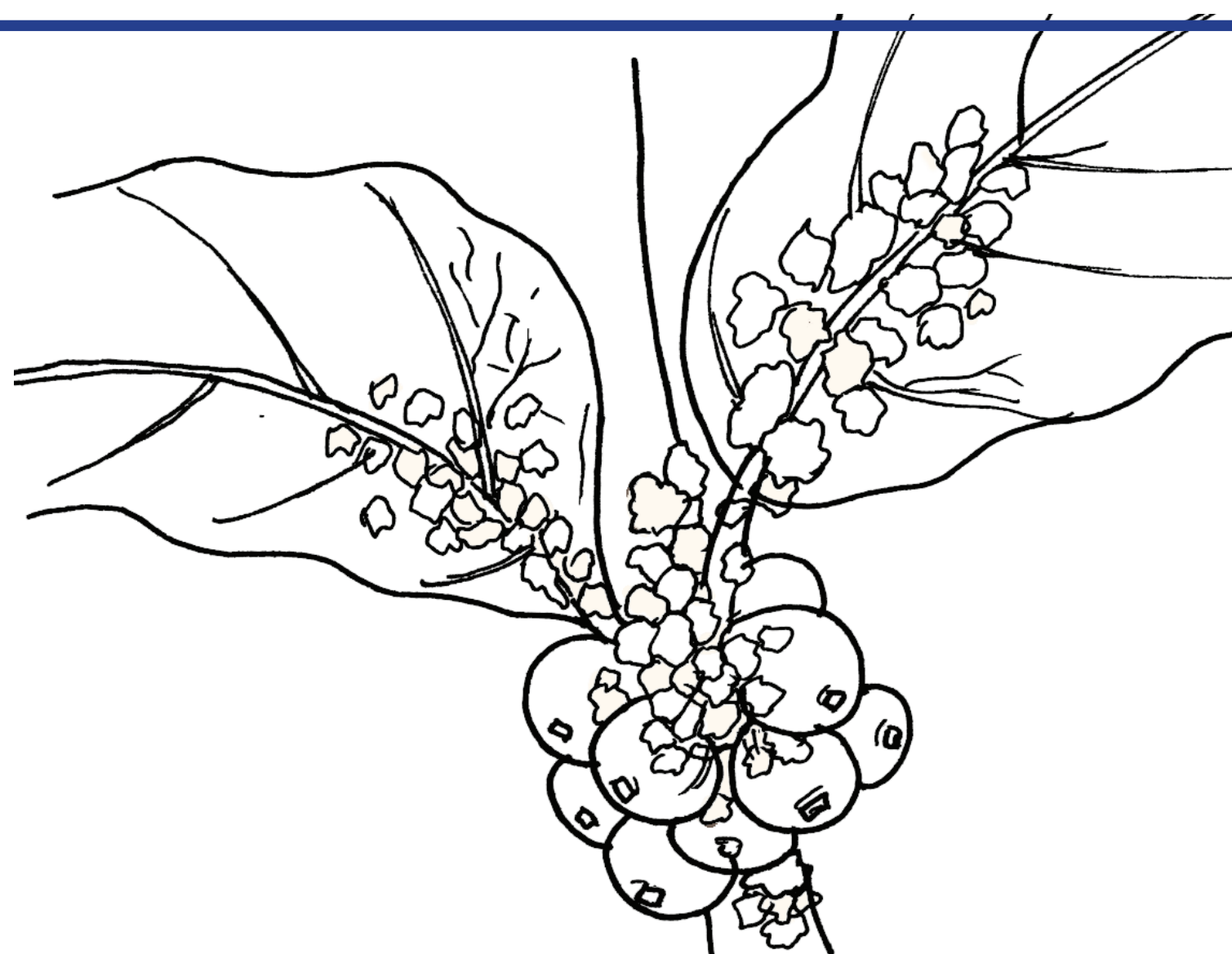
Green scales



Tailed caterpillar



Or



Leaf mealy bug

